



PICOTE SMART FILL

Fill the Holes in Your Project with Injectable Polyurethane Foam



Picote Smart Fill is a unique flowable fill product designed to fill large voids in and around deteriorated & damaged pipes.

The specially formulated blend of open cell polyurethane foam is designed to flow into all of the areas where the bottom of the pipe is missing and then gently expand to fill the voids. After just 15 minutes the Smart Fill will cure and excess foam in the pipe can be easily removed with the Picote Premium Cyclone Chain or Smart Cutter™ Grinding Panels.

With a newly filled bottom, the pipe can then be safely lined or coated without fear of losing tools or material in what was once hazardous voids.

USES, BENEFITS, PRODUCTS & SPARE PARTS

- Quickly & easily fill in trench rot and pipe voids.
- A case of Smart Fill includes 6 dual cylinder cartridges that provide a 1:1 mixing ratio.
- Smart Fill has a 1 year shelf life.
- 0% VOC content!
- See next page for installation steps.



Apply with your Picote Smart Mixer.

Smart Fill Technical Specifications

Category	Measurement
Pumping Distance	40' (12m)
Delivery Method	Mini Coating Pump delivery hose via Smart Mixer
Expansion Ratio	10 times by volume
Reaction Time	1 minute
Cure Time	15 minutes
Storage Temp	40-100°F (5-38°C)

Smart Fill Product List

PN	Description
2110002004	Picote Smart Fill (6 cartridges per case with 8 tips & 3 nuts)
2130001001	Picote Smart Mixer 2.0 (includes small & large plunger)
2220100003	Delivery Hose for Mini Coating Pump (82' /25m package)
2130001001	Cartridge Tip (package of 10 pieces)
2110000002	Cartridge Nut (package of 10 pieces)

More Info/Guides/Technical Support:

- Visit picoteinstitute.com for e-learning courses, educational videos, quick guides, & manuals.
- For more information on products, spare parts, assembly and operation, consult the Smart Fill Manual or contact Picote Technical Support.
- For hands-on product training, Picote operates training centers in USA, UK, and Finland.

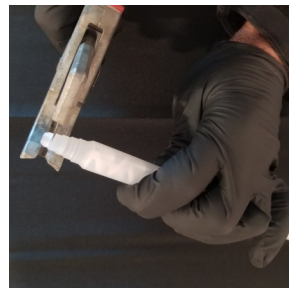
Smart Fill Installation Instructions



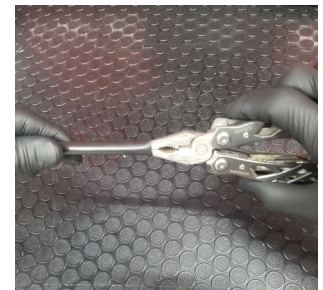
- 1. Ensure Smart Mixer has the 2 large plungers installed.**
To replace plunger, remove the bolt in the head and change to the larger plunger.



- 2. Slide retaining nut onto mixing tip.**



- 3. Cut off mixing tip at first tier. Use pliers tip to slightly widen the end of the delivery hose. Slide the delivery hose fully over the mixing tip's next tier.**



- 4. Use the tip of needle nosed pliers to slightly widen the end of the delivery hose. Slide the delivery hose fully over the mixing tip tier.**



- 3. Secure with a 10mm (3/8") hose clamp centered over the end of the delivery hose and next tier. Insert cartridge into Smart Mixer. Attach Static Mixing Tip.**



- 6. Push the delivery hose down the pipe to the desired position. If possible, position a camera behind delivery hose to see application.**



- 7. Turn the Smart Mixer downward and pump the Smart Fill into the pipe. Allow 15 minutes to cure.**



- 8. Remove excess foam in DN70 (3") pipe and larger with a Premium Cyclone Chain. In DN50 (2") pipe and smaller, use the Mini Smart Sweeper or Side Grinding Panels. Vacuum or flush clean.**